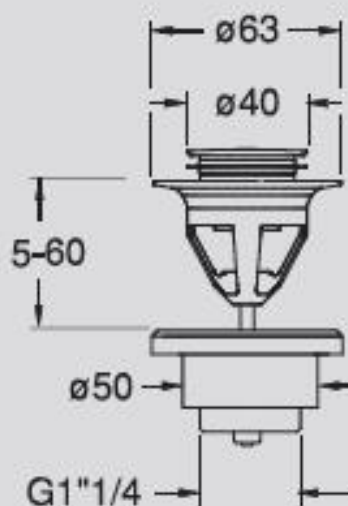
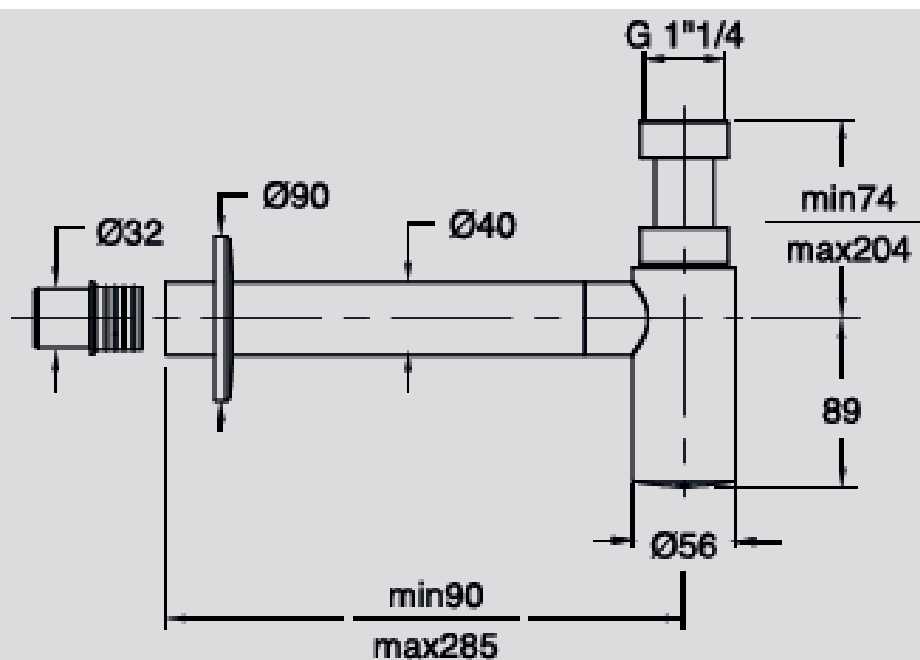


OPTIONAL – STEEL BOTTOM



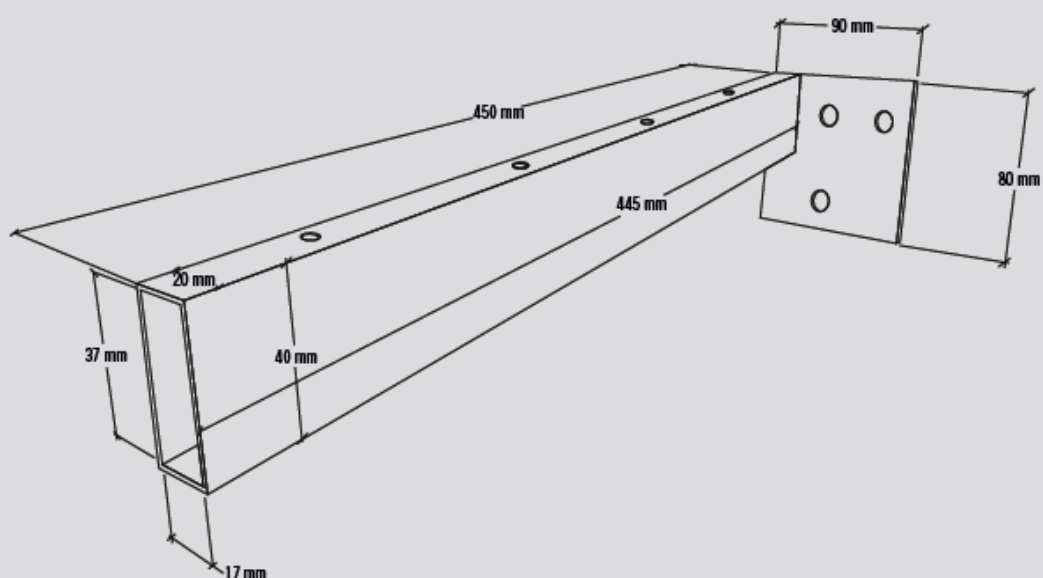
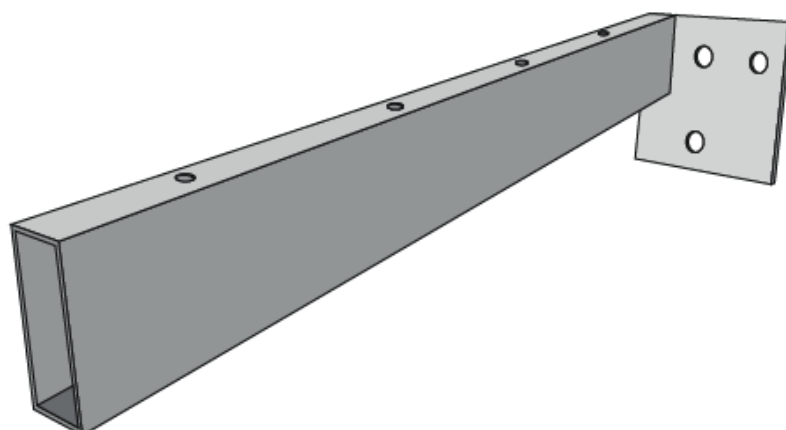
PT

Scarico per lavabo 1" 1/4 "up&down" ottone finitura cromata
 Drain 1" 1/4 "up&down" brass chromed finishing
 Vidage pour lavabo 1" 1/4 "up&down" laiton finition chromée



SA

Sifone estetico finitura cromata 1" 1/4
 1" 1/4 basin siphon chrome finishing
 Siphon pour lavabo 1" 1/4 finition chromée



ST

Staffa in acciaio zincato
Galvanized steel bracket
Support en acier galvanisé

MOBILETTO TELAIO



MT

Telaio in acciaio inox verniciato (nero) con piedini regolabili. Tubolare 20x20 mm.
Misure (LxPxH) 800/1000/1200 mm x 500mm x 740 mm (per misure diverse richiedere preventivo)

il telaio è fornito in kit.

Painted stainless steel frame (black) with adjustable feet. Tubular 20x20 mm.

Measurements (LxPxH) 800/1000/1200 mm x 500mm x 740 mm (different sizes have to be quoted).

The frame is supplied in kit.

Cadre en acier inoxydable peint (noir) avec pieds ajustables. Tubulaire 20x20 mm.

Mesures (LxPxH) 800/1000/1200 mm x 500mm x 740 mm (demander un devis pour différentes tailles).

Le cadre est fourni en kit.

N.B. È possibile realizzare una mensola porta-oggetti da posizionare nella parte inferiore del telaio. Inviare richiesta di preventivo indicando il colore e lo spessore desiderato.

N.B. It is possible to make a shelf to be inserted in the lower part of the frame. Send a request for a quote indicating color and thickness.

N.B. Il est possible de créer une étagère à insérer dans la partie inférieure du cadre. Envoyer une demande de devis en indiquant la couleur et l'épaisseur.

